

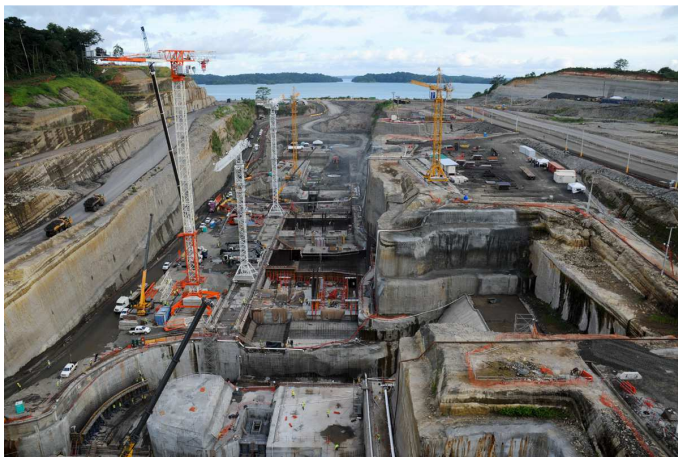


Project:

Panama Canal

Construction of the third set of locks

Period: 2011-2012



THE PROJECT:

The project for the expansion of Panama Canal, especially the construction of the third set of locks, represents one of the major engineering works in the world. It has a value of 3.22 billion dollars and provides for the creation of a new canal in addition to the existing one which will allow the transit of larger vessels, increasing the commercial traffic to respond, in this way, to the shipping market's requests that register a continuous expansion.

LAB WORK:

The task was to determine indexed, mechanical and dynamical properties of some soils involved in the work.

The following geotechnical laboratory tests were carried out:

- Classification tests,
- Edometric tests with controlled load incrementations
- Direct shear tests
- Triaxial CIU tests
- Hydraulic conductivity tests carried out in triaxial cell
- Cyclic torsional shear tests
- Resonant column apparatus tests



Equipment for resonant column apparatus



Laboratorio autorizzato ai sensi art. 59 DPR 380/01 dal 2004
info@vicenzetto.it - www.vicenzetto.it